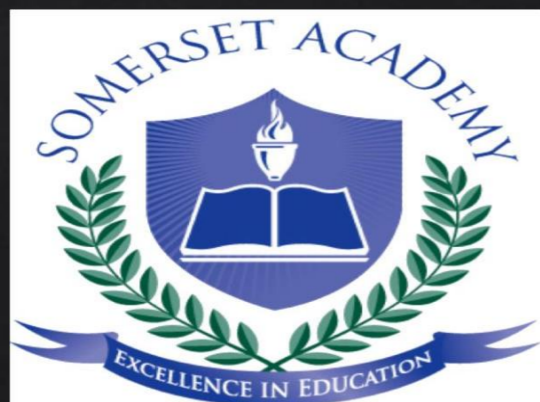


SOMERSET PURPOSE

◆ Somerset Academy, Inc. promotes a transformational culture that maximizes student achievement and the development of accountable, global learners in a safe and enriching environment that fosters high-quality education.



S - Set high expectations

O - Objective

M - Meaningful curriculum

E - Effective

R - Resourceful and responsible life long learners

S - Scholars who achieve proficiency and beyond

E - Evaluate continuously and use data to drive curriculum

T - Teachers who are highly qualified

DO NOT...

“Hang out” in the stairwells or on the second floor during lunch.

Chew gum. DO NOT BRING GUM!

Go on the basketball court with a skateboard!

Use the elevator without approval from the office.

Leave campus if you are a Middle Schooler, Freshman or Sophomore (Except for DE students)

Allow an underclassmen in your vehicle without prior permission, or you will lose all privileges for the remainder of the school year.

Throw anything off the balcony.

Throw anything from the ground level to the 2nd floor.

Eat or carry food over the basketball court or turf field

Litter or leave garbage around at lunch

Hang out by the wavy wall side or behind the basketball court bleachers

Hang on or grab the basketball nets/rims

Playing “keep away” = a detention

Yoga pants/ leggings/ are not allowed. Not even during dress down days. Dress code violations earn detentions

You are not to go to the Deans’ office during class to argue a detention. You will be turned away.

**NO FOOD
ON THE
COURT**





There is NO open food or liquid on the turf!!!

If you are caught, you will be having a meeting with the deans



Tutoring Schedule

Mondays - ENGLISH (please see the schedule for which teach is staying for tutoring. The schedule is posted in all English teacher Classrooms)

Tuesdays - Math (ALL Math teachers)

Wednesdays - Social Studies

Thursdays - Science

Fridays - NONE

Need tutoring for electives? See your teacher to schedule.



**Yearbooks for Sale
for \$55 from
September-Jan.
13th, then prices
will go up to \$85.**

Come to room 228 to buy one with cash or
check from Ms. Devereux

Attention Students

- Do Not Spray any Body Sprays , Perfumes or Cologne's in the Restroom or Locker rooms. Anyone caught will receive a Detention



Dress Code Violations (Do Not Wear)



Sweatpants, Joggers
or Pajama Pants



Ripped or
Frayed
Jeans

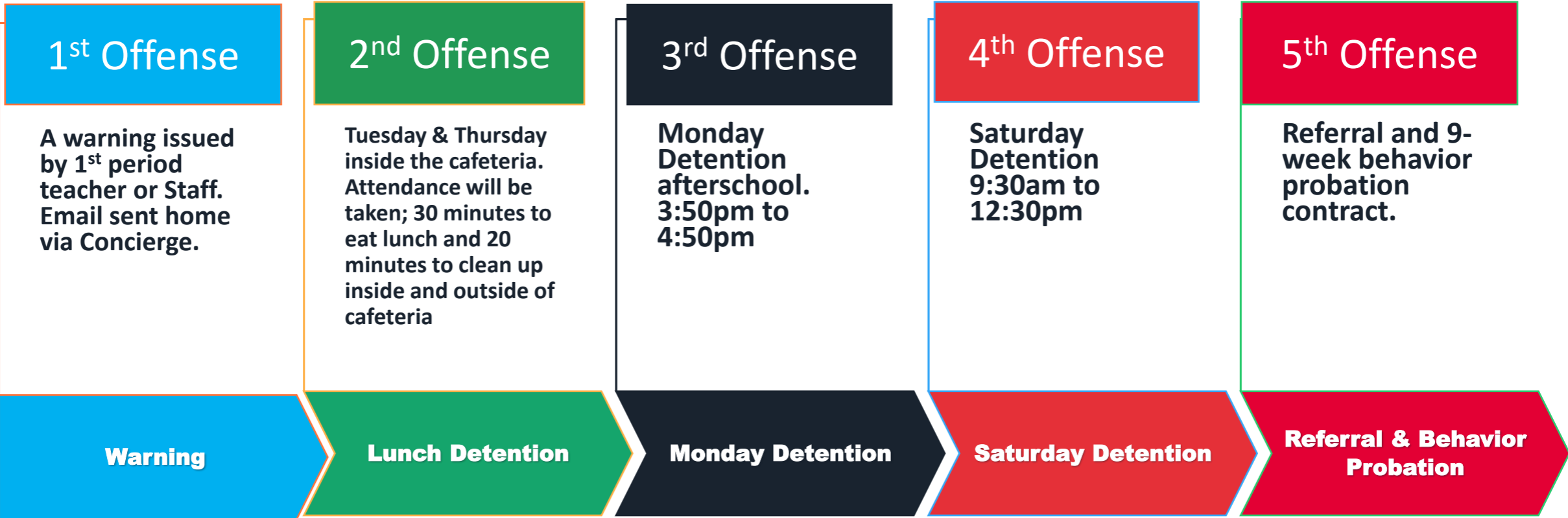
Non-Somerset Hoodies, Polos
or Sweatshirts



Crocs or
Slides



Discipline Matrix (Uniform Violation)



Dress Code Violation



Attention Students

Effective Immediately; A Somerset College Prep shirt of any kind must be worn underneath a zip up Hoodie or Jacket. Anyone not in compliance will be given a Dress Code Violation according to our Discipline Matrix





BSA Troop 448

Donation Drive for SafeSpace Florida

Help Gabriel Frey's Eagle Scout Project

- ▶ Participate in Gabriel Frey's **donation drive** to help **SafeSpace Florida**, which provides safe nights to people in need.
- ▶ Drop your **items** (list on next slide) in **your house's** box in the **cafeteria!** *Money donations are not accepted.*
- ▶ **House points will be awarded!**
- ▶ *The last day for donations is March 9th.*



BSA Troop 448

Donation Drive for SafeSpace Florida

Help Gabriel Frey's Eagle Scout Project

► Cleaning Supplies

- Laundry supplies
- Hand Soap
- Cleaning agents (Bleach, Windex, Lysol, etc.)

► Personal Items

- Personal hygiene supplies
- Feminine products
- Hair/skin products

► Bath/Linens

- Shower curtains/rugs
- Bathroom accessories
- Towels/wash cloths
- Pillows

► Kitchen

- Silverware
- Pots/pans
- Accessories (can openers, etc.)

- These are only some of the items. The full list is available at <https://safespacefl.org/wish-list/>.
- The list will also be sent out via text blast.





SOMERSET COLLEGE PREP FUNDRAISER NIGHT

AT DUFFY'S OF SUPERPLAY

1608 N. W. Courtyard Cir. | Port St. Lucie , FL 34986

772.924.3565

MONDAY, MARCH 6
5:00PM - 9:00PM

Bring this flier and **20% of the proceeds will be donated to** Somerset College Prep.

SPARTANS

- PROM COMMITTEE IS HOSTING A DINE TO DONATE AT DUFFY'S BAR AND GRILL.
- WHEN DINING IN OR ORDERING TAKE OUT, PLEASE SHOW THEM THIS FLYER.
- IT CAN BE A SCREENSHOT ON YOUR PHONE OR THE ACTUAL FLYER.
- FLYERS WILL BE AVAILABLE IN THE FRONT OFFICE FOR PICKUP!
- MONDAY, MARCH 6TH
- 5:00 – 9:00PM
- 1608 NW COURTYARD CIR, PORT ST. LUCIE, FL 34986
- THANKS FOR ALL YOUR SUPPORT!

Annual Pop Tab Drive

- **March 27-March 31 starts SGA's annual pop tab drive!**
- **Bring in all pop tabs to the cafeteria and drop them off in assigned house containers.**
- **This is a House Competition and points will be awarded to the top three Houses.**
- **Points will be determined by weight in lbs.**
- **All pop tabs will be donated to the Ronald Mcdonald House Charites to provide housing and food for families of patients at Children's Hospital.**



House Cornhole Competition

- A House based Cornhole Competition will be featured at the March 10th House Wars
- When it will happen:
 - March 6-7-8-9 there will be play in rounds.
 - The Play-In-Rounds will be made up for 8 students per house (Teams of 2 for each game)
 - Students can sign up as a pair or Individually
 - Based on Wins/Loses & points Houses will be ranked 1-5.
- On the 10th there will be finals to determine points
 - #1 vs #2 (Determining 1st & 2nd Place)
 - #3 vs #4 (Winner places 3rd Overall)
 - #5 Automatically Eliminated
- The Sign up will be open until 4PM on March 3rd.
 - If more than 8 people sign up per house students will be randomly selected from the Volunteers

SIGN UP USING THIS QR CODE →



Cornhole House Competition
March 10th 2023



VERSUS WEEK:
ATHLETES VS MATHLETES.
MONDAY.

- School-appropriate attire is required.
- \$2 per spirit day.
- On Monday, students can wear outfits that fit the theme of an athlete or mathlete, which is basically a smart academic type of outfit or a sports outfit.
- Detentions will be issued to outfits not considered school appropriate and if a dress down wristband is not purchased.
- Bands can be purchased in the morning or during lunch.



VERSUS WEEK: DUOS VS TRIOS. TUESDAY.

- School-appropriate attire is required.
- \$2 per spirit day.
- On Tuesday, a pairing of two or three people can dress up as a famous/icon duo or trio.
- Detentions will be issued to outfits not considered school appropriate and if a dress down wristband is not purchased.
- Bands can be purchased in the morning or during lunch.



VERSUS WEEK:
DRESS UP VS DRESS DOWN.
WEDNESDAY.

- School-appropriate attire is required.
- \$2 per spirit day.
- On Wednesday, students can come in dressed fancy wearing smart outfits such as suits or dresses or dress down and come in causal wear.
- Detentions will be issued to outfits not considered school appropriate and if a dress down wristband is not purchased.
- Bands can be purchased in the morning or during lunch.



VERSUS WEEK: HEROS VS VILLANS. THURSDAY.

- School-appropriate attire is required.
- \$2 per spirit day.
- On Thursday, students can dress up as one of their favorite hero or villain in any story/comic/movie.
- Detentions will be issued to outfits not considered school appropriate and if a dress down wristband is not purchased.
- Bands can be purchased in the morning or during lunch.





CRAZY FOR CRUMBL COOKIES

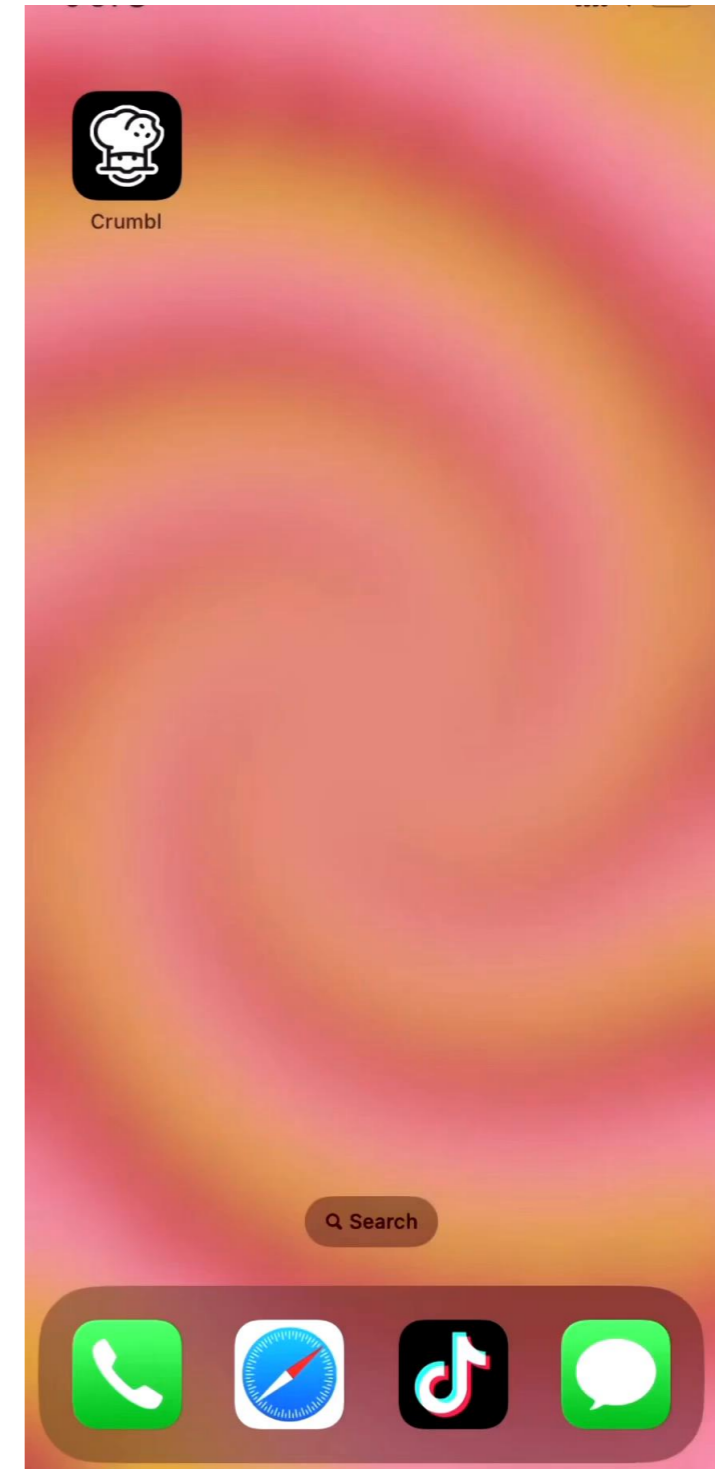
- SGA IS PARTNERING WITH CRUMBL COOKIES & WILL BE ON SALE EVERY THURSDAY IN THE MORNINGS BEFORE FIRST PERIOD.
- ORDERS CAN BE MADE THROUGH THE CRUMBL APP, BUT NEED TO BE SCHEDULED FOR DELIVERY TO SCPA AT 11:00AM-11:30AM ON THURSDAY.
- \$4.50 PER COOKIE, WITH IN PERSON CASH / CHECK PAYMENTS ONLY, UNLESS YOU ORDER THROUGH THE APP.
- ALL ORDERS, WITH PAYMENT, MUST BE SUBMITTED BEFORE FIRST PERIOD THURSDAY MORNINGS.
- COOKIES WILL BE DISTRIBUTED IN THE BREEZEWAY THURSDAYS DURING LUNCH.

**Order your Crumbl
cookies via the app on THURSDAYS only
by following the video directions.**

**You CANNOT order any other day. Or the order
will not be delivered.**

**DO NOT order the
ice cream.**

**Message SGA on insta a pic of you with your
Crumbl box for a chance to be featured on our
page! @scpa.sga**



PIE YOUR TEACHER!!
ALL PROCEEDS GO TO THE
PROM COMMITTEE!

- Enter as many votes as you like for your opportunity to pie your favorite or least favorite teacher the day before spring break.
- See Mrs. Ruiz in the front office to purchase your voting tickets!



Teachers & Staff who are participating so far are as follow:

Mr. Matluck, Ms. Peggy, Mrs. Ruiz (front office), Mr. Rivera, Mrs. Bethel, Ms. Platt, Mr. Marsh, Ms. DeCesare, Ms. Brown, Ms. Harrel, Mr. Delacruz, Ms. Stratton, Ms. Wally, Ms. Devereux, Mr. Ludwig, and Ms. Douglas. With more teachers joining everyday!!



SUMMER CAMP Jobs



Join the City of Port St. Lucie's Parks & Recreation department for the summer!

We have open positions from \$11-\$17 an hour.

Build skills and relationships that last a lifetime!

For details on available positions, please visit our website.



www.GovernmentJobs.com/Careers/CityofPSL

JUNE 5-AUG. 4

Open positions available at both Minsky Gym and The MIDFLORIDA Event Center.



Find us on Port St. Lucie Parks & Recreation Facebook Group



www.PSLParks.com | 772-878-2277 Dates are subject to change.

This advertisement meets School Board Policy 9.40 for distribution of the advertisement. However, this acknowledgment does not represent an endorsement or recommendation of the product/service advertised.

Work for the City of Port St. Lucie!

SCAN ME



Find us on Port St. Lucie Parks & Recreation Facebook Group

Are You Creative? Have an interest in drawing? Painting? Telling visual stories?



Any high school student interested in taking AP Art or Painting next year, please see Mrs. Douglas in Room 267 or email her at:

douglas.jennifer@somersetcollegeprep.org

to express interest.

#beanartnerd



The
**Student
Podcast
Challenge**



This year's **Student Podcast Challenge** will open for entries on **Jan. 6, 2023** and close on **April 28**

<https://www.npr.org/2022/12/14/1141665744/student-podcast-challenge-contest-npr-2023>

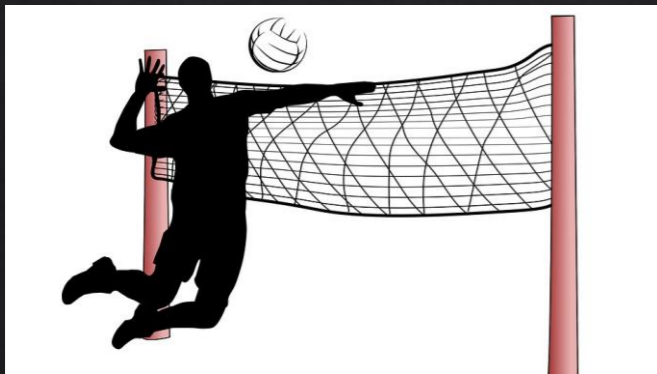


TURF DURING LUNCH



Volleyball

- ❖ Monday-Friday: NO SPIKING!!!



Basketball

- ❖ Monday/Wednesday: Middle school only
- ❖ Tuesday/Thursday: Highschool only
 - ❖ Rotate Fridays



Super Signers



ASL CLUB



ASL



MEETINGS EVERY WEDNESDAY
@ LUNCH IN QUICKS ROOM/
THEATER

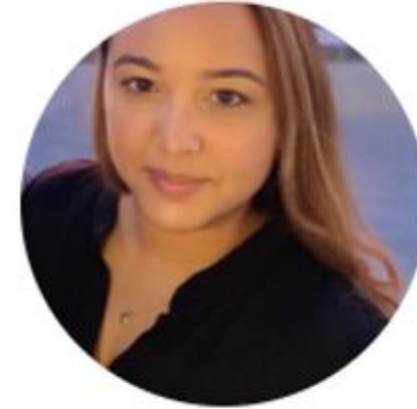


Clubs

- Chorus Club for high school on Mondays, after school, in 268
- D & D, Mondays, after school, in 175
- Mock Trial in 263, on Mondays and Tuesdays during lunch.
- Salsa Dancing in 136, on Tuesdays and Thursdays at lunch.
- SGA, every other Wednesday, after school, from 3:45-5 in room 222
- GSA on Wednesdays in 169 at lunch 11:55am-12:30pm
- ASL on Wednesdays in the theater room, at 12pm on lunch.
- Chorus Club for middle school on Thursdays, after school, in 268
- Chess Club- Thursday at lunch, in 232
- Senior Committee Meeting, Thursdays, after school, in 136

YOUR AMAZING COUNSELORS!

6th & 9th = Salazar



7th & 11th = DeLaCruz



8th and 10th = Fuksman



12th = Russo



House Reminds

For anyone who needs the house remind this year ☺ This is important for communication with your house head.

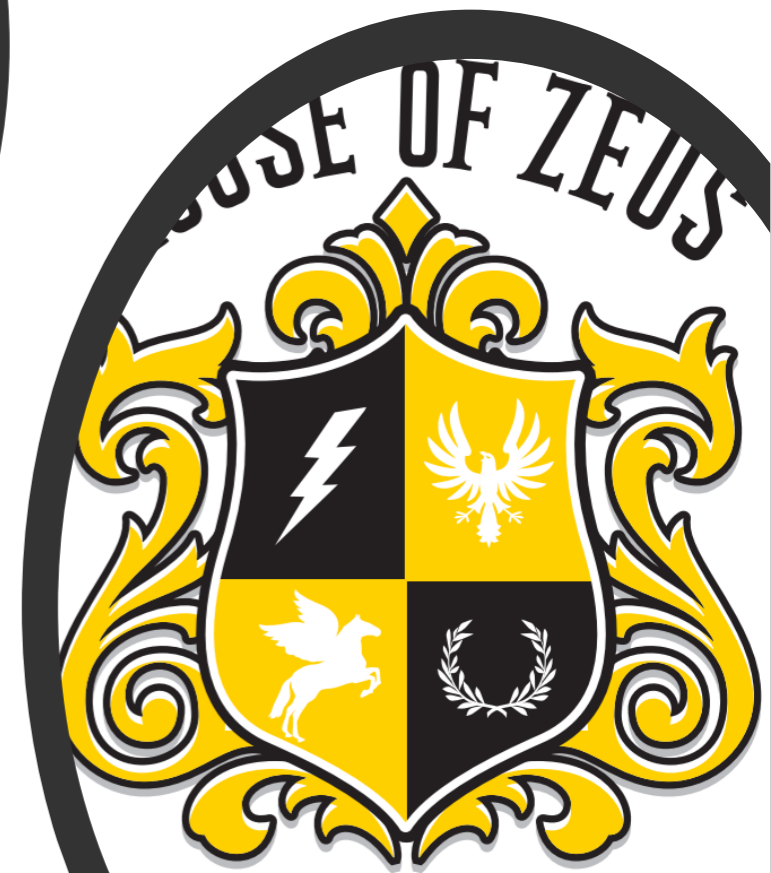
Ares-@houseare

Athena-@scpaathena

Hestia- @househes

Poseidon- @psdnscpa

Zeus-@housezeus





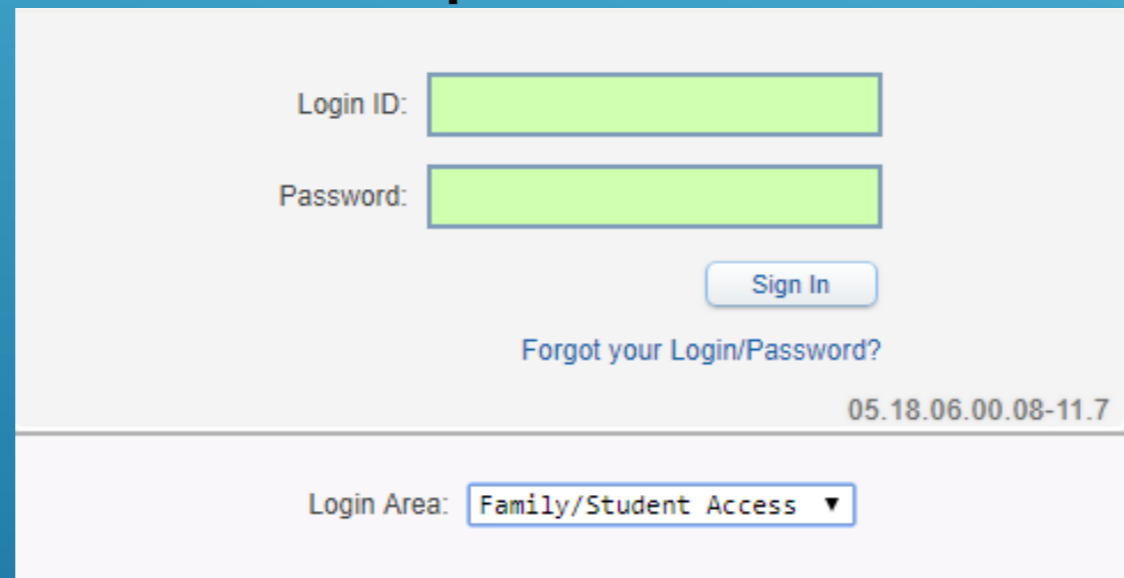
STUDENT SKYWARD ACCESS



Login ID: (Student 562#)

Password: (8 Digit Birthdate - MMDDYYYY)

Example: 08032005



The screenshot shows a login form with the following elements:

- Label: Login ID:
- Label: Password:
- Button: Sign In
- Text: [Forgot your Login/Password?](#)
- Text: 05.18.06.00.08-11.7
- Text: Login Area:

****You May access Skyward through the school's website.**